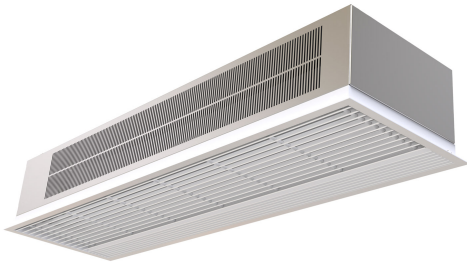


Egenskaper



- Självständig konstruktion gjord av galvaniserad stål, redo att installeras infälld i ett falskt tak.
- It has both internal and external fixings. Electrical and electronic connections inside.
- Intagsgrill (underhållsfri) i aluminiumprofil och utblåsmunstycke, integrerad i en enkel vit ram, färg RAL9016Andra färger tillgängliga vid efterfrågan
- Anodiserad uttag i aluminium, luftfolieformade.
- Tysta vridna korsflödesfläktar drivna av en extern rotormotor med två hastigheter.
- "P" type with water heated coil and integrated regulation for ON/OFF or three stages 0-10V proportional valve. "E"-typ med elektroniskt skyddade element, tresteg med integrerad reglering. "A"-typ utan uppvärmning, endast luft.
- Advanced Plug&Play control. Includes: Advanced PRO control with LCD display and integrated thermostat, door contact, 7m and remote control. With integrated functions: door delay (configurable); interface mode; operation, alarm and maintenance warning signals; and multiple digital inputs that modify the air curtain's operation.
- Includes protective varnish for the electronic board and control.
- Optional:
 - Auxiliary temperature sensors that improve air curtain control and increase energy savings.
 - Clever PRO intelligent control (automatic, programmable, ModBus via PLC, timer, etc.) with an additional temperature sensor.

Specifikationer

50Hz

ouppvärmd			
Modell	(m³/h)	(kW)	(m)
RA 1000 A	2,5-3,5		
RA 1500 A	2,5-3,5		
RA 2000 A	2,5-3,5		

elvärmd			
Modell	(m³/h)	(kW)	(m)
RA 1000 E	2,5-3,5		
RA 1500 E	2,5-3,5		
RA 2000 E	2,5-3,5		

Vattenvärmd				
Modell	(m³/h)	(kW)	(kW)	(m)
RA 1000 P86	2,5-3,5			
RA 1500 P86	2,5-3,5			
RA 2000 P86	2,5-3,5			
RA 1000 P64	2,5-3,5			
RA 1500 P64	2,5-3,5			
RA 2000 P64	2,5-3,5			

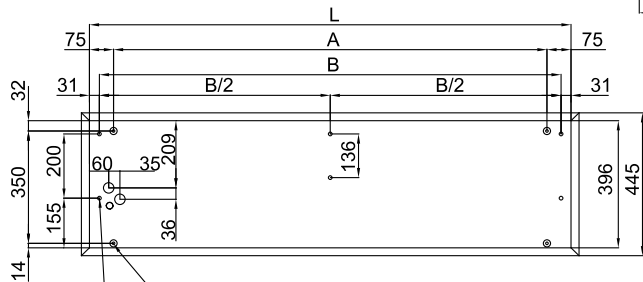
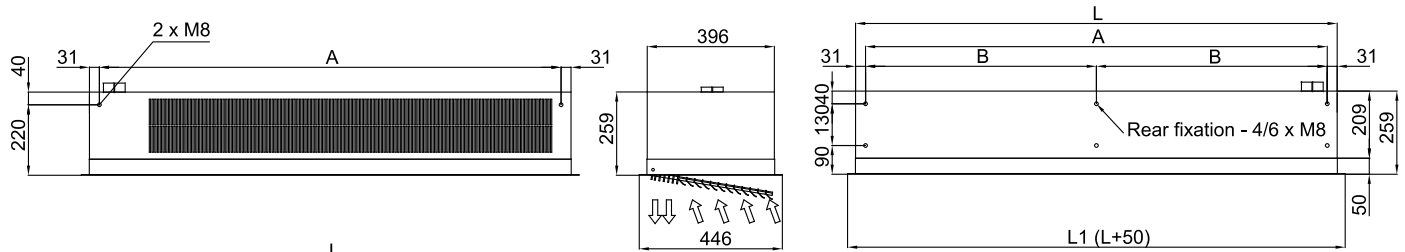
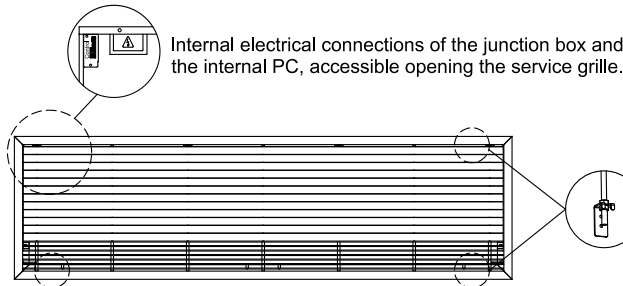
60Hz

ouppvärmd		
Modell	(m³/h)	(m)
RA 1000 A 60Hz	2,5-3,5	

ouppvärm

Modell	(m³/h)	(m)
RA 1500 A 60Hz	2,5-3,5	
RA 2000 A 60Hz	2,5-3,5	

Dimensioner



Hanging fixation 1 (by default) - 4 x M8 Through-holes for routing the fasteners to the interior.
 Hanging fixation 2 (optional) - 4/6 x M8 Holes for external fastening.

	L	L1	A	B	B/2
RA 1000 A, P, E	1000	1050	850	938	-
RA 1500 A, P, E	1500	1550	1350	1438	-
RA 2000 A, P, E	2000	2050	1850	1938	969